



Brook Warner @ Soul Machines

Moving Beyond Transactional Value with AI.

How Digital People Empower Emotional Connection



Moving Beyond Transactional Value.

- AI technology of today is lacking trust by **facelessly** optimizing for utility & efficiency.
- Research suggests that AI applications & use cases with a bias towards **connection** outperform purely transactional use cases.
- Emotional engagement drives **trust** & loyalty, **critical** for healthcare and personal situations.

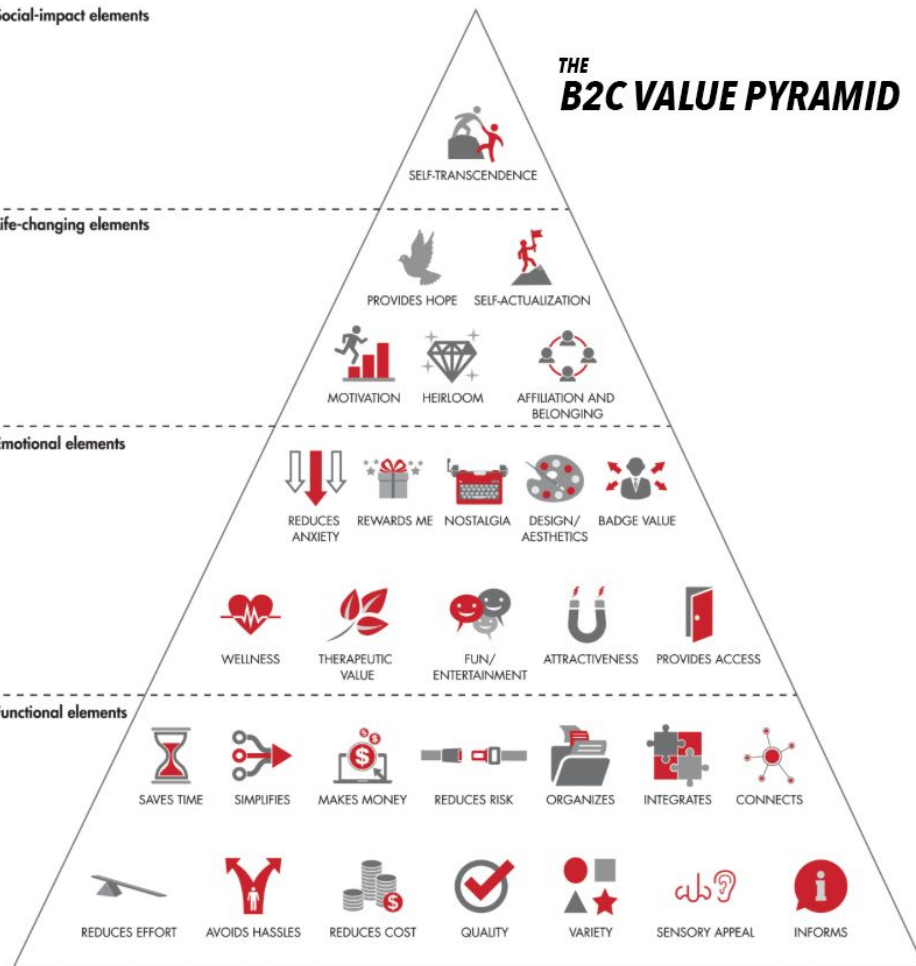
Social-impact elements

THE B2C VALUE PYRAMID

Life-changing elements

Emotional elements

Functional elements





The Soul Machines Platform.

Soul Machines AI Assistants leverage the best LLMs, enhancing them with our Experiential AI™ technology for the most lifelike & dynamic AI experiences possible.



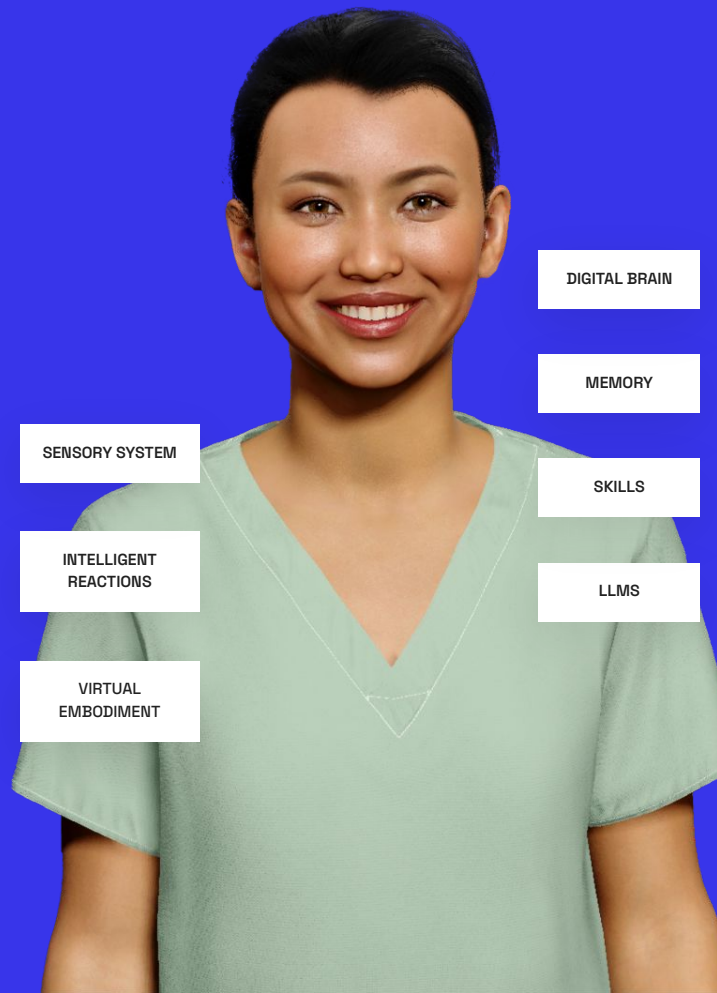


Soul Machines Digital People.

By utilising:

- Real time continuous multimodal interaction.
- Digital human senses & a virtual embodiment.
- An AI Framework based in human neurobiology.
- Incorporating emotionally intelligent reactions, short-term/long term memory, goals & attention systems.

This allows them to behave empathetically, to simulate various personalities & to build trust through realistic human-like action.





Soul Machines Studio.

Soul Machines Studio allows you to create, train and deploy a unique, autonomously animated AI avatar in minutes.

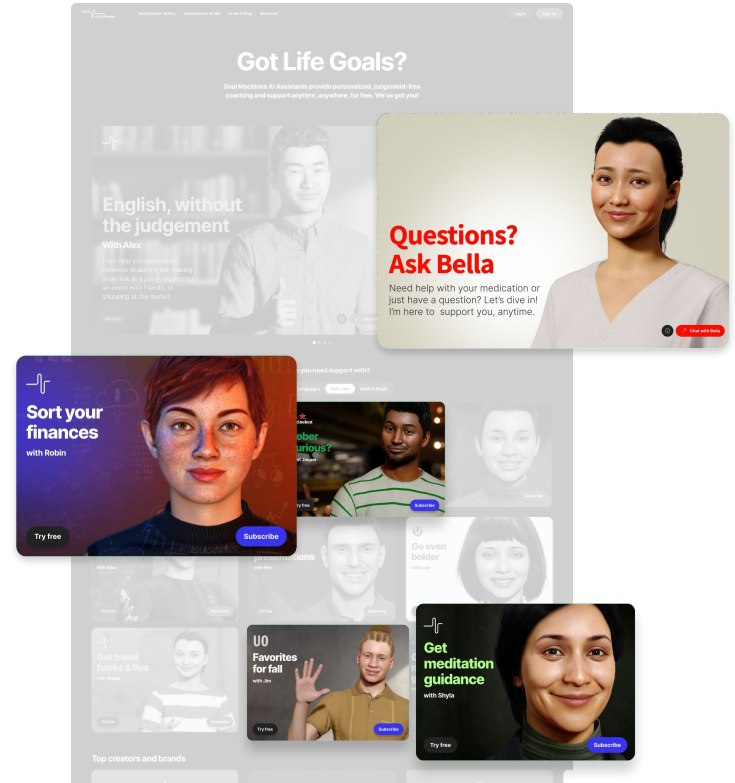
Our easy-to-use tools allow you to customize face, features, personality and even gestures. Choose from a large range of voices, languages and skills. You can integrate any LLM for brand-specific knowledge, or enable an AI-driven Large Language Model like ChatGPT.

Then easily deploy your Digital Person across multiple platforms.





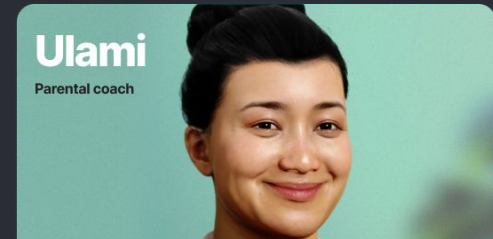
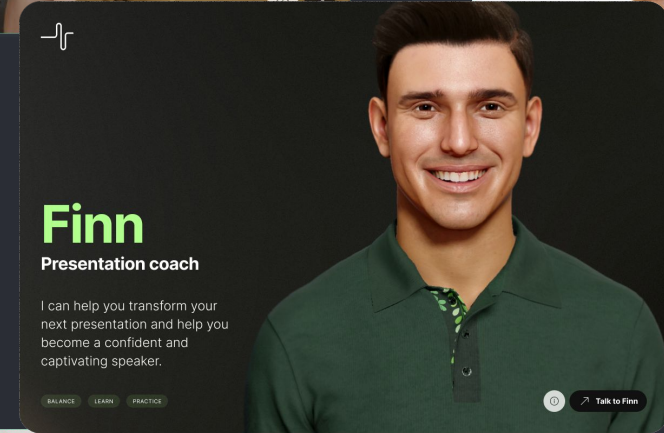
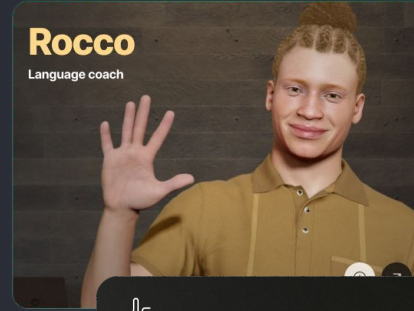
Where are Digital People most effective?



No Judgement Assistance.

Our empathetic, embodied AI Assistants see you, hear you, & remember you - critical ingredients for creating trust & building an ongoing relationship.

- Many people have sensitive topics to discuss, but our studies have shown that they **fear stigma or judgement**.
- Soul Machines is enabling everyone to have access to an AI assistant who is **always available**, **judgment-free**, and **relatable** to their unique needs.





A Human Who's Not a Human.

Addressing Stigma with AI



Alcohol use



Clinical Trial Disclosures



Sexually Transmitted Infections



Smoking Cessation



Vulnerability, Availability, & Accessibility.



Smarter health support. Anytime.

Need help with your medication or just have questions?

General questions? Ask Bella

Need help with your medication or
just have a question? Let's dive in!
I'm here to support you, anytime.

Chat with Bella



Diabetes



Chat with Bella

Immunology



Chat with Bella

Obesity



Chat with Bella

Atopic dermatitis



Chat with Bella

Pain



Chat with Bella

Colitis



Chat with Bella



Emotional Value in Healthcare AI.

Consider how AI can shift from simply solving problems to understanding user needs—making users feel heard, valued, and supported in their **most vulnerable moments**.

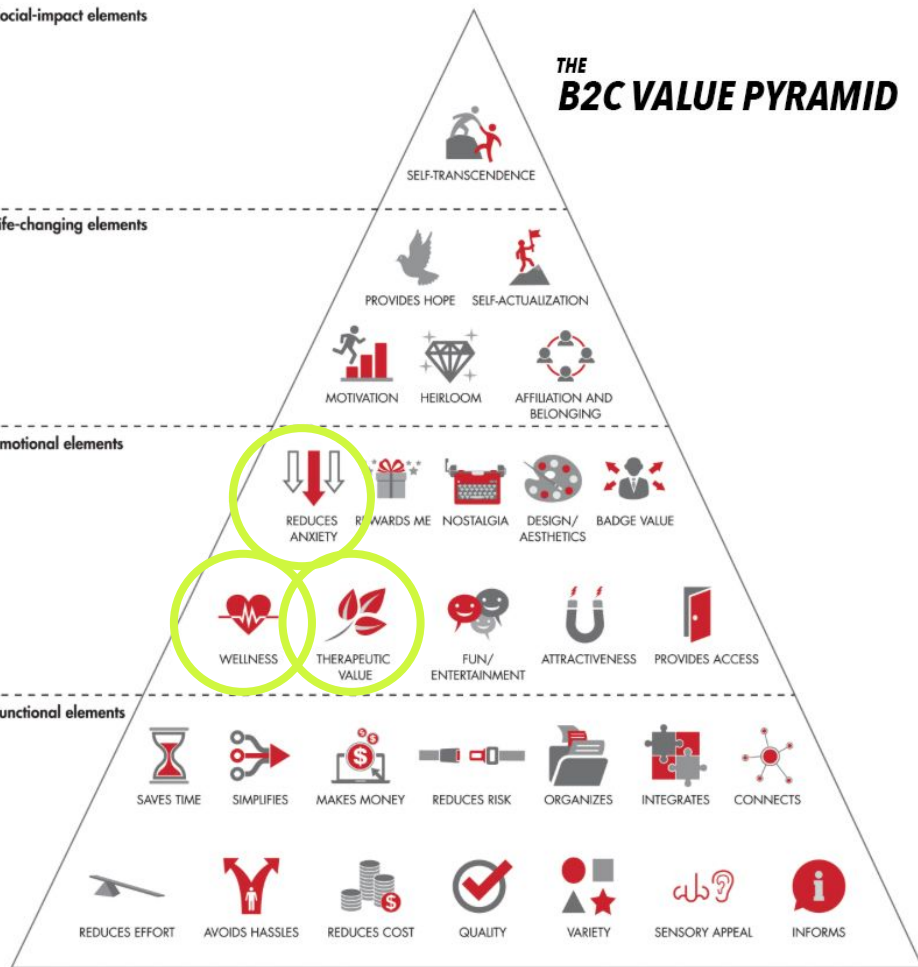
Social-impact elements

THE B2C VALUE PYRAMID

Life-changing elements

Emotional elements

Functional elements





DEMO



DEMO

BACKUP



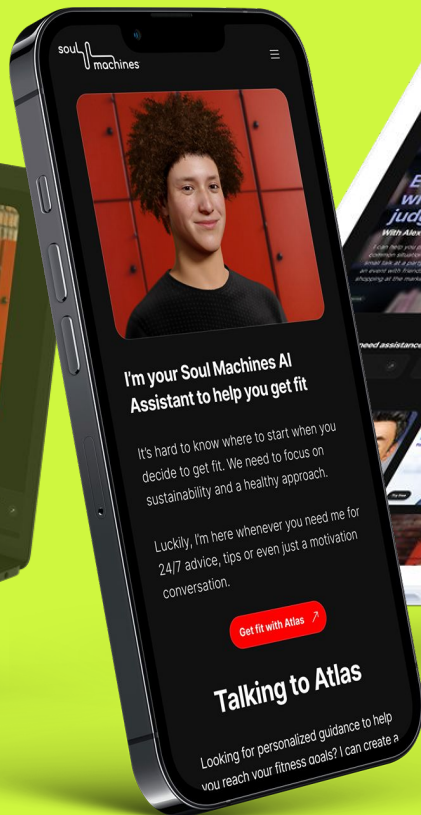
Questions?

brook.warner@soulmachines.com





Building The Experience Ai Marketplace.





AI Assistant Store.

White-labelling of our AI Assistant Store to bring the benefits of the Soul Machines platform to your entire organization, offering curated training and learning in one secure location on your network.

